

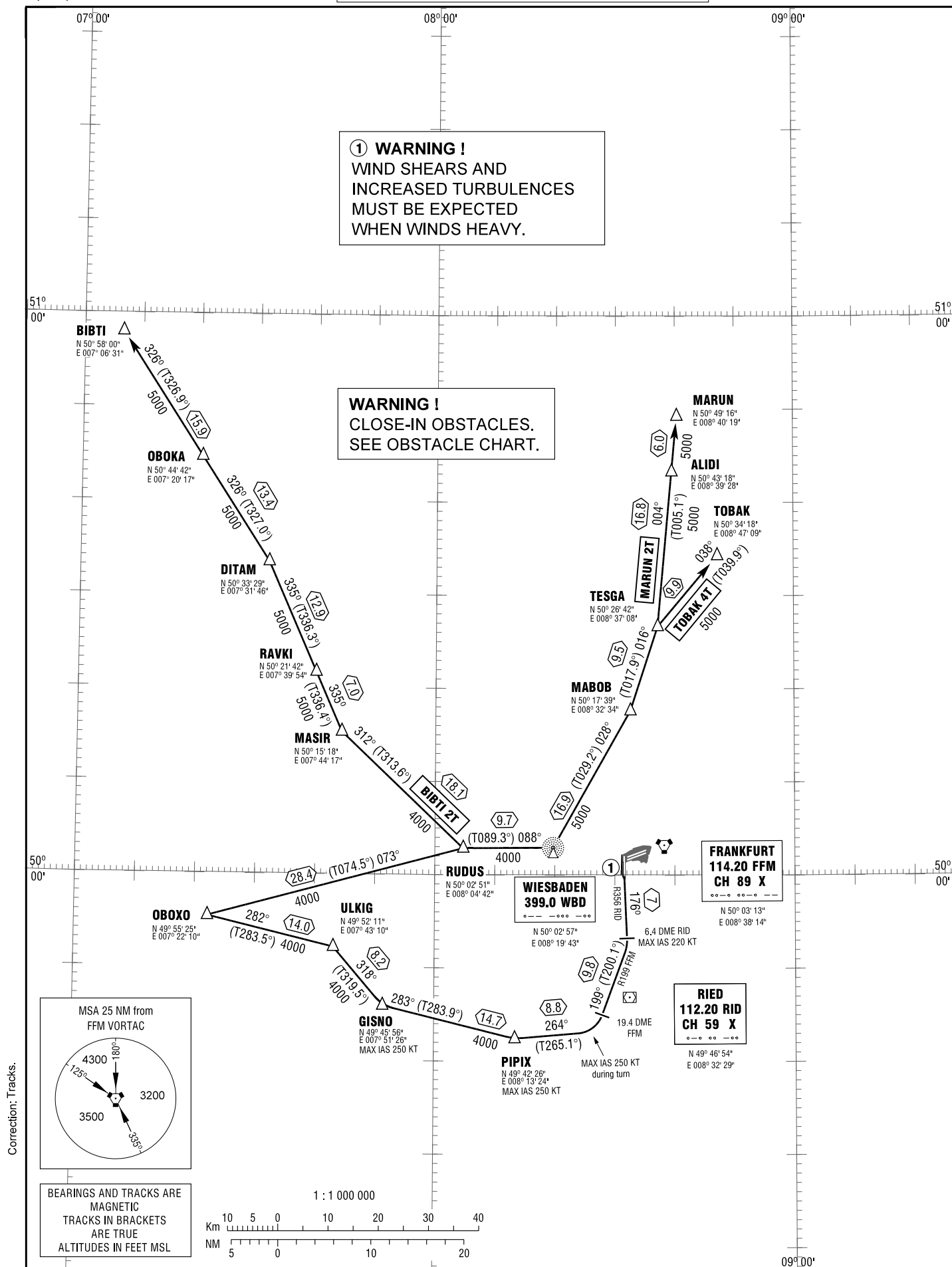
STANDARD DEPARTURE
CHART - INSTRUMENT
(SID)TRANSITION
ALTITUDE 5000
VAR 1° E

ATIS	118.725	APRON	121.750	GROUND	121.800
DELIVERY	121.900		121.850	TOWER	119.900
(Initial Call)			121.950	LANGEN RADAR	136.125

FRANKFURT MAIN
RWY 18
TANGO

① WARNING !
WIND SHEARS AND
INCREASED TURBULENCES
MUST BE EXPECTED
WHEN WINDS HEAVY.

WARNING !
CLOSE-IN OBSTACLES.
SEE OBSTACLE CHART.



STANDARD DEPARTURE
ROUTES – INSTRUMENT
(SID)

FRANKFURT MAIN

RWY 18

SIDs with Route Designator **TANGO**

1. SIDs with designator **TANGO** (Contingency SIDs) will be assigned **by ATC only** under special circumstances, e.g. closure of one of the parallel runways when Landing Direction is 07.
2. **NON-RNAV (enroute only)** equipped aircraft shall use NON-RNAV SIDs with designator **CHARLIE** and **QUEBEC** respectively.

Designator	Route	After Take-Off		Remarks
		Climb to	Contact	
1	2	3	4	5
BIBTI 2T	BIBTI TWO TANGO On RWY track to 800; on R356 RID to 6.4 DME RID north of RID (max. 220 KIAS); RT, on R199 FFM to 19.4 DME FFM; RT, (max. 250 KIAS during turn) on track 264° to PIPIX; RT, (max. 250 KIAS during turn) on track 283° to GISNO; RT, (max. 250 KIAS during turn) on track 318° to ULKIG(Δ); LT, on track 282° to OBOXO(Δ); RT, on track 073° to RUDUS(Δ); LT, on track 312° to MASIR; RT, on track 335° via RAVKI to DITAM; LT, on track 326° via OBOKA to BIBTI(Δ). Cross 6.4 DME RID max. 4000. GPS/FMS RNAV: [A800+] - DF160[K220-; A4000-; R] - DF200[K250-; R] - PIPIX[K250-; R] - GISNO[K250-; R] - ULKIG[L] - OBOXO[R] - RUDUS[L] - MASIR[R] - RAVKI - DITAM[L] - OBOKA - BIBTI.	4000 ft	Langen Radar 136.125*	After 19.4 DME FFM BRNAV equipment necessary.
MARUN 2T	MARUN TWO TANGO On RWY track to 800; on R356 RID to 6.4 DME RID north of RID (max. 220 KIAS); RT, on R199 FFM to 19.4 DME FFM; RT, (max. 250 KIAS during turn) on track 264° to PIPIX(Δ); RT, (max. 250 KIAS during turn) on track 283° to GISNO(Δ); RT, (max. 250 KIAS during turn) on track 318° to ULKIG(Δ); LT, on track 282° to OBOXO(Δ); RT, on track 073° to RUDUS(Δ); RT, on track 088° to WBD (Δ); LT, on track 028° to MABOB; LT, on track 016° to TESGA; LT, on track 004° via ALIDI to MARUN (Δ). Cross 6.4 DME RID max. 4000. GPS/FMS RNAV: [A800+] - DF160[K220-; A4000-; R] - DF200[K250-; R] - PIPIX[K250-; R] - GISNO[K250-; R] - ULKIG[L] - OBOXO[R] - RUDUS[R] - WBD[L] - MABOB[L] - TESGA[L] - ALIDI - MARUN.			
TOBAK 4T	TOBAK FOUR TANGO On RWY track to 800; on R356 RID to 6.4 DME RID north of RID (max. 220 KIAS); RT, on R199 FFM to 19.4 DME FFM; RT, (max. 250 KIAS during turn) on track 264° to PIPIX(Δ); RT, (max. 250 KIAS during turn) on track 283° to GISNO(Δ); RT, (max. 250 KIAS during turn) on track 318° to ULKIG(Δ); LT, on track 282° to OBOXO(Δ); RT, on track 073° to RUDUS(Δ); RT, on track 088° to WBD (Δ); LT, on track 028° to MABOB; LT, on track 016° to TESGA; RT, on track 038° to TOBAK (Δ). GPS/FMS RNAV: [A800+] - DF160[K220-; A4000-; R] - DF200[K250-; R] - PIPIX[K250-; R] - GISNO[K250-; R] - ULKIG[L] - OBOXO[R] - RUDUS[R] - WBD[L] - MABOB[L] - TESGA[R] - TOBAK.			1. After 19.4 DME FFM BRNAV equipment necessary. 2. Not for flights continuing via Z10.

(Sample: QBOXO fly-over way point)

* Departure frequency may deviate from the frequency published.
Check ATIS for current departure frequency.

Contact LANGEN RADAR when advised by Tower!