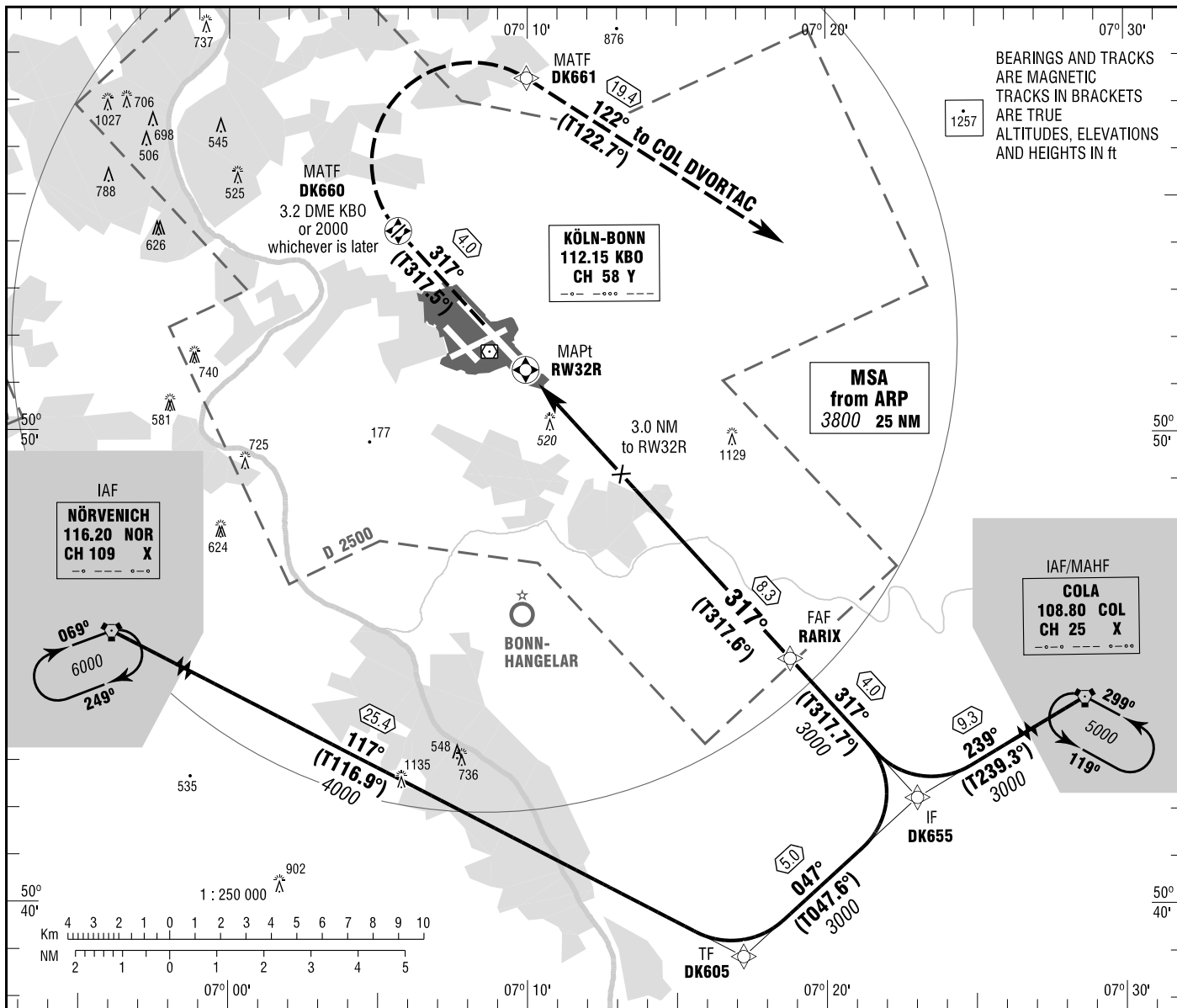


KÖLN/BONN
RNAV (GPS)
RWY 32R

ATIS	112.150 (KBO)	GROUND	121.725
DIRECTOR	124.200	MIL (GND)	136.250
TOWER	121.050		254.650

ELEV 302
OCH RELATED TO VAR 0°
THR 32R ELEV 302

INSTRUMENT
APPROACH
CHART - ICAO



BEARINGS AND TRACKS
ARE MAGNETIC
TRACKS IN BRACKETS
ARE TRUE
ALTITUDES, ELEVATIONS
AND HEIGHTS IN ft

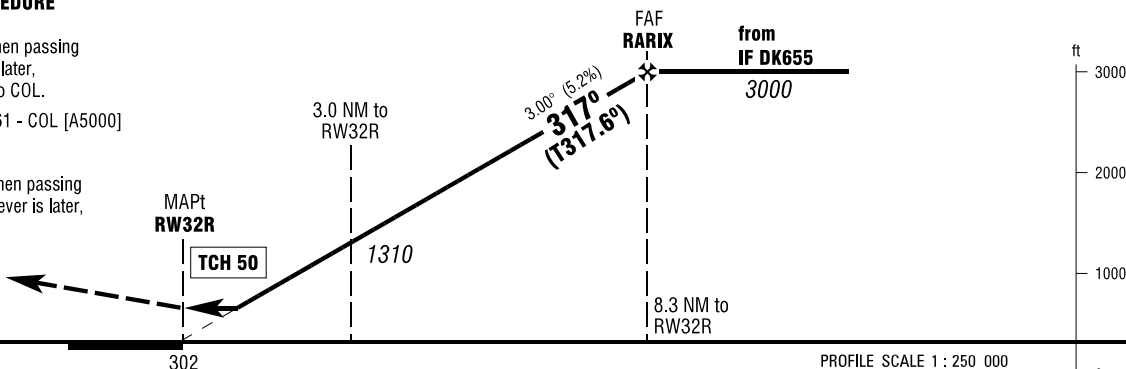
MISSED APPROACH PROCEDURE
RNAV (GPS)

Climb on track 317° 5000, when passing 2000 or DK660, whichever is later, RT via DK661 on track 122° to COL.

DK660 - [A2000+; R] - DK661 - COL [A5000]

NON-RNAV

Climb straight ahead 5000, when passing 2000 or 3.2 DME KBO, whichever is later, RT to COL DVORTAC.



OCA (OCH)	A	B	C	D
GPS	770 (470)	770 (470)	770 (470)	770 (470)

DIST THR / RW32R	2	3	4	5	6	7	8
ALTITUDE	990	1310	1630	1950	2270	2590	2900

Timing not authorized for defining the MAPt.

GS	kt	80	100	120	140	160	180
RARIX - RW32R (8.3 NM)	MIN:SEC	6:14	4:59	4:09	3:33	3:07	2:46
Rate of descent (5.2%)	ft / MIN	420	530	640	740	850	960

Correction: Communications.