

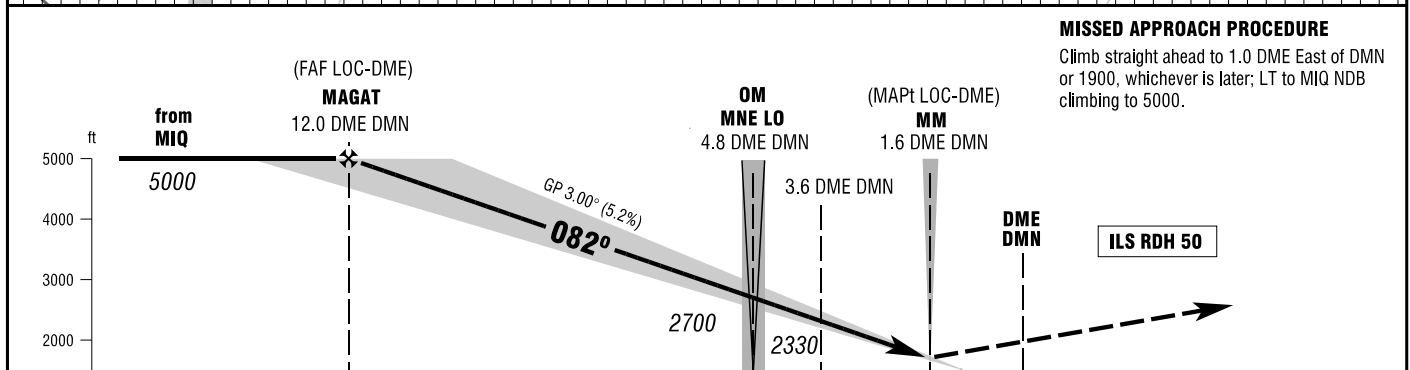
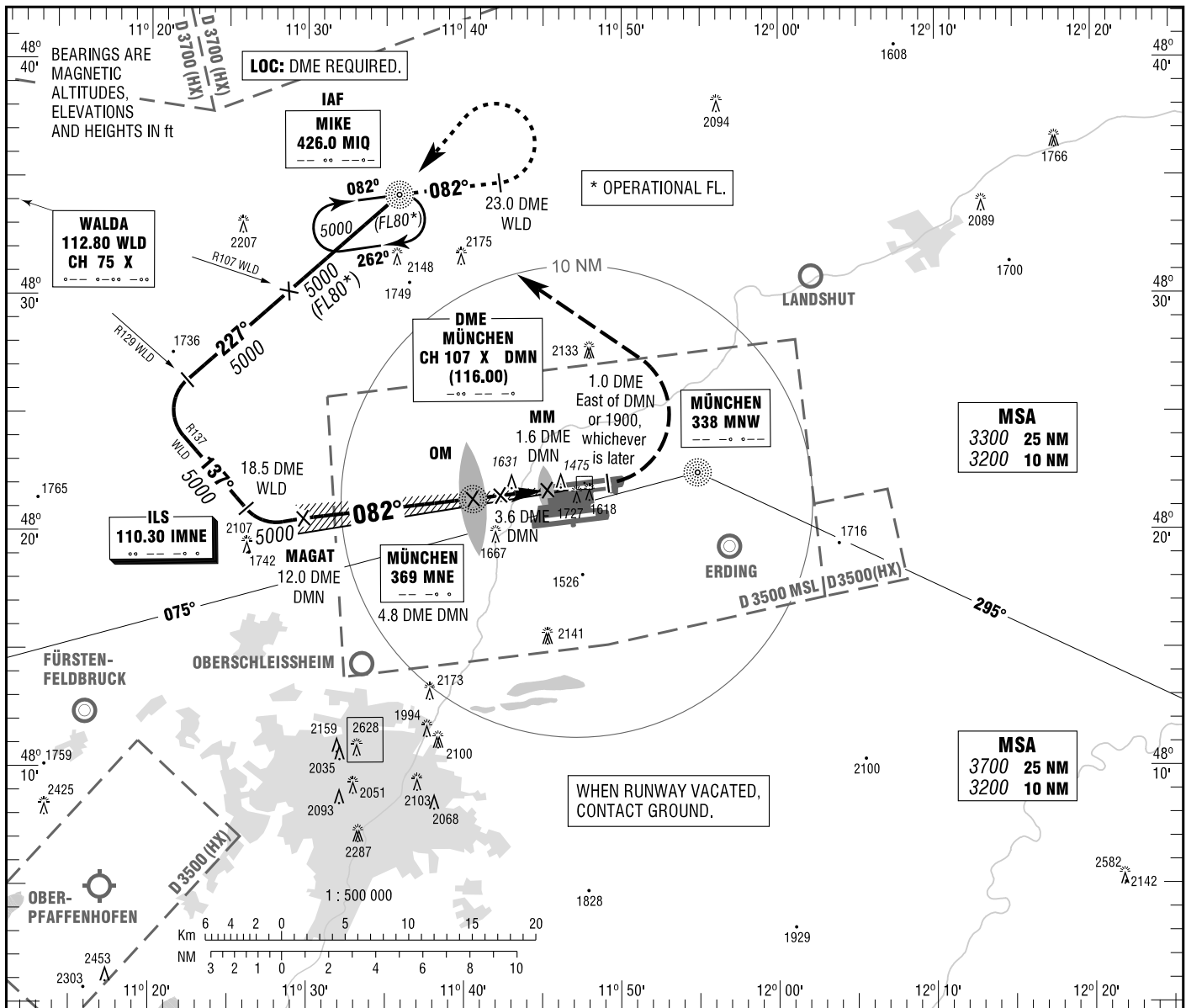
MÜNCHEN
ILS CAT II & III or LOC
RWY 08L

ATIS 123.125
RADAR 123.900
DIRECTOR 118.825
TOWER 118.700

GROUND 121.975
APRON (W) 121.775
APRON (E) 121.700

ELEV 1487
OCH RELATED TO VAR 2° E
THR 08L ELEV 1467

INSTRUMENT
APPROACH
CHART - ICAO



MISSED APPROACH PROCEDURE

Climb straight ahead to 1.0 DME East of DMN or 1900, whichever is later; LT to MIQ NDB climbing to 5000.

| OCA (OCH) | A | B | C | D | D _i |
|------------|------------|------------|------------|------------|----------------|
| ILS CAT I | 1606 (139) | 1616 (149) | 1625 (158) | 1635 (168) | |
| ILS CAT II | 1517 (50) | 1534 (67) | 1547 (80) | 1560 (93) | |
| LOC-DME | 1880 (410) | 1880 (410) | 1880 (410) | 1880 (410) | |

| DME DMN | 11 | 10 | 9 | 8 | 7 | 6 | 5 | 4 | 3 |
|----------|------|------|------|------|------|------|------|------|------|
| DIST THR | 9.9 | 8.9 | 7.9 | 6.9 | 5.9 | 4.9 | 3.9 | 2.9 | 1.9 |
| ALTITUDE | 4670 | 4360 | 4040 | 3720 | 3400 | 3080 | 2760 | 2450 | 2130 |

LOC-DME: Timing not authorized for defining the MAPt.

| GS | kt | 80 | 100 | 120 | 140 | 160 | 180 |
|------------------------|----------|------|------|------|------|------|------|
| OM - THR (3.7 NM) | MIN:SEC | 2:47 | 2:13 | 1:51 | 1:35 | 1:23 | 1:14 |
| Rate of descent (5.2%) | ft / MIN | 420 | 530 | 640 | 740 | 850 | 960 |

CAT IIIA AND CAT IIIB (MNM RVR 75M) APPROVED.

Correction: Obstacles, OCA(H) obstacles & values, procedure.